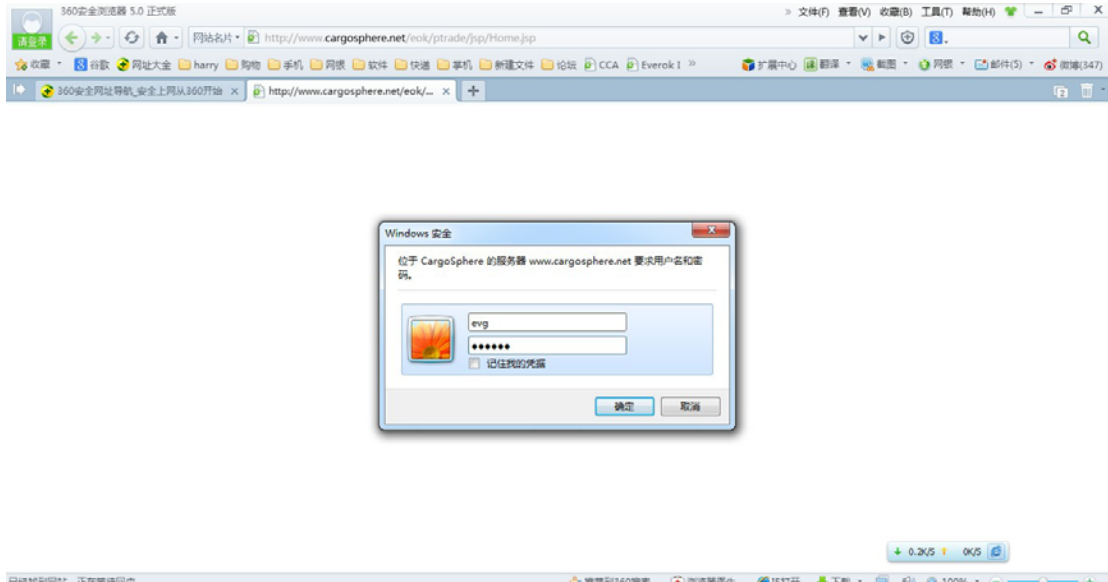


# Cargosphere Operation Manual

1. When you enter the system, it request to safety verification as below.

User ID: evg

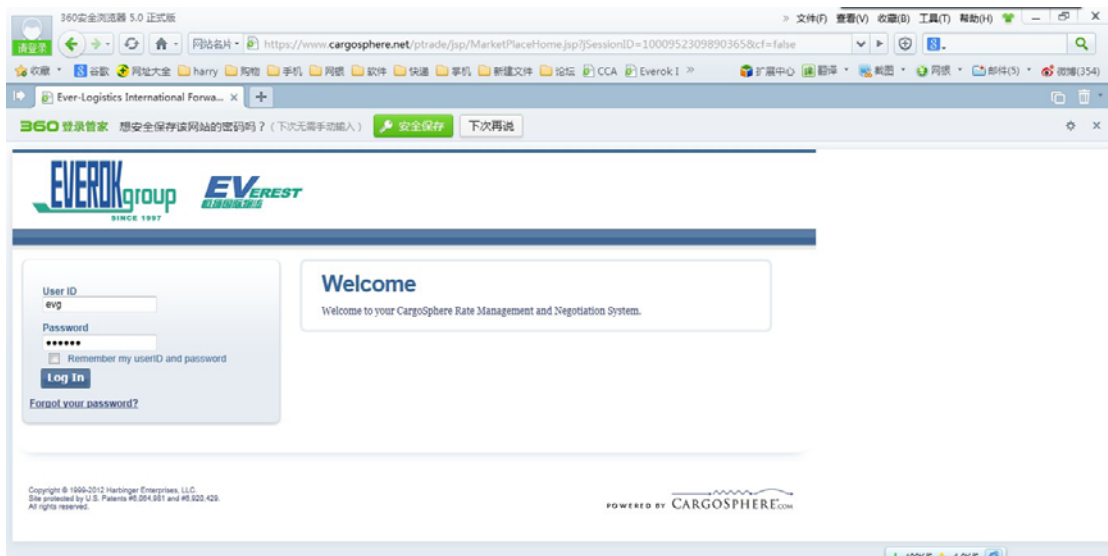
Password: evg123



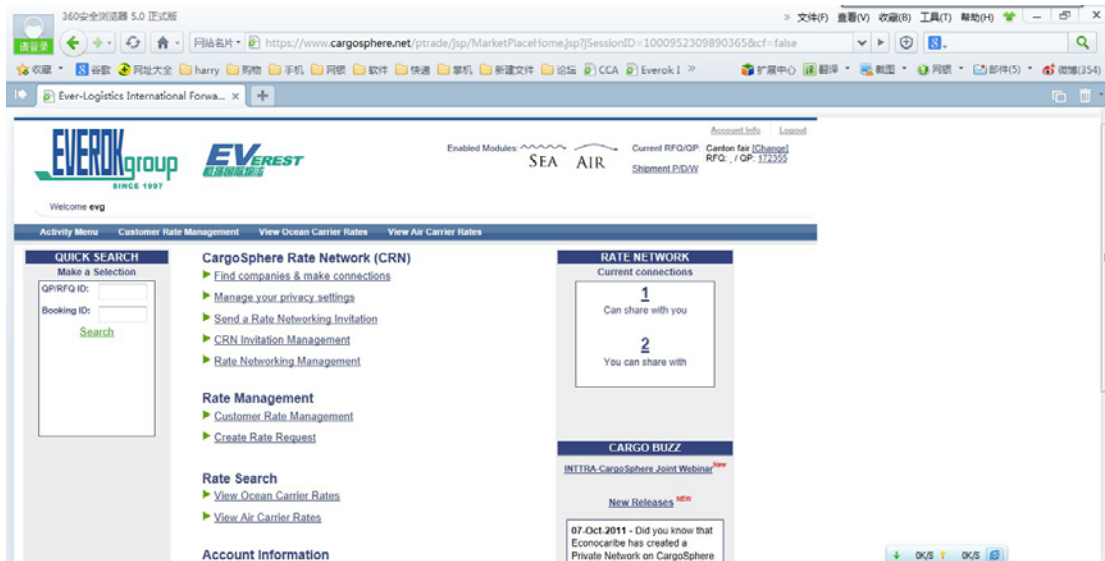
2. Then you enter the system, pls log in.

User ID: evg

Password: evg123

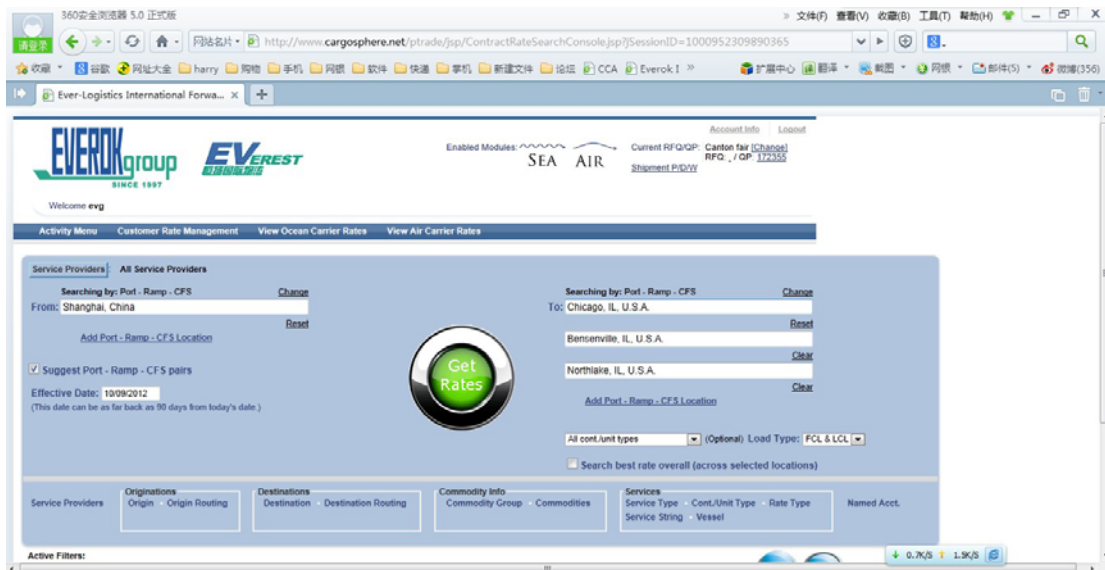


### 3. Menu



4. To search tariff, pls click " View Carrier Contracts", click "View Ocean Carrier rate or View Air Carrier Rates"

For example: search the tariff fm Shanghai to Chicago



5. Then you can find below tariff sheet

Contract Info	INTRA Ocean Schedules	Origin	Destination	Change/Exp. Date	Service Type Service String/ Vessel/ Rate Type/ Transit Time	Commodity / Commodity Group	Scroll Pricing	+ B.O.L. (USD)	Cntr. 20 ft	Cntr. 40 ft	Cntr. 48 ft HS	Cntr. 45 ft
Everok		Shanghai, China (Port)	Via: USWC To: Chicago, IL, U.S.A. (Ramp)	14-Oct-2012	Jaguar/New Orient for filing	Cargo nos (excluding reefer & hazardous cargo) (Non-hazardous) Included		---	3,088.00	3,808.00	3,858.00	---
Everok		Shanghai, China (Port)	Via: Port of Vancouver To: Chicago, IL, U.S.A. (Ramp)	14-Oct-2012		GDSM FURNITURE CONSOLIDATED (Non-hazardous) Included		---	3,088.00	3,808.00	3,968.00	---
Everok		Shanghai, China (Port)	Via: Port of Vancouver To: Chicago, IL, U.S.A. (Port)	31-Oct-2012		Chemical (Non-Haz), Nos. Metal Goods, Nos. Plastics Goods, N (Non-hazardous) Included		---	3,195.00	3,909.00	4,002.00	---
Everok		Shanghai, China (Port)	Via: Port of Vancouver To: Chicago, IL, U.S.A. (Ramp)	31-Oct-2012		Need to apply (Non-hazardous) Included		---	3,225.00	3,959.00	4,052.00	---
Everok		Shanghai, China (Port)	Via: Port of Tacoma To: Chicago, IL, U.S.A. (Ramp)	14-Oct-2012		GDSM FURNITURE CONSOLIDATED (Non-hazardous) Included		---	3,178.00	3,968.00	4,068.00	---
Everok		Shanghai, China (Port)	Via: Port of Prince Rupert To: Chicago, IL, U.S.A. (Ramp)	31-Oct-2012		Need to apply (Non-hazardous) Included		---	3,275.00	4,008.00	4,182.00	---

6. You can click "+" to check the details of the tariff

Contract Info	INTRA Ocean Schedules	Origin	Destination	Change/Exp. Date	Service Type Service String/ Vessel/ Rate Type/ Transit Time	Commodity / Commodity Group	Scroll Pricing	+ B.O.L. (USD)	Cntr. 20 ft	Cntr. 40 ft	Cntr. 48 ft HS	Cntr. 45 ft
Everok		Shanghai, China (Port)	Via: USWC To: Chicago, IL, U.S.A. (Ramp)	14-Oct-2012	Jaguar/New Orient for filing	Cargo nos (excluding reefer & hazardous cargo) (Non-hazardous) Included		---	3,088.00	3,808.00	3,858.00	---

**Surcharges**

Applicable surcharges: **ISPS 8.00** **PSS 400.00**

Included: none

Subject to: AMS

B.O.L. surcharges: none

**Service Info**

Trade Lane: ASIA TO USA

Transit Time: --

Frequency: --

**Contract Notes**

Trade Lane: --

Rate Specific: --

**Base Ocean Freight Pricing**

Shanghai (Port) = Chicago (Ramp): 3,088.00

Base rate: 2,800.00

GR amount: 0.00

Surcharges: 400.00

**Total Ocean Freight: 3,088.00**

+ B.O.L. Surcharges: 0.00